



Eckington School

Pastoral Support Assistant

Applicant Pack



Contents

The vacancy.....	3
Post advert	3
Role summary	3
Job description.....	5
Specific duties and responsibilities	5
Support for the trust/school	6
Changes to these duties.....	6
Person Specification	8
Job Title: Pastoral Support Assistant	8
Knowledge, experience and skills	8
Qualifications	8
Other skills	8
Interpersonal skills	9
Child protection	9
Eckington School & Sixth Form	10
Chorus Education Trust	11
To apply	12
Disability confident	12
Safeguarding	12



The vacancy

Post advert

Deadline for applications:	11.59pm on 24 August 2025
Interviews to be held:	Week beginning 1 September 2025
To start:	September 2025

Required to start in September, a Pastoral Support Assistant to work within our friendly, fast paced and experienced team, providing an efficient and effective pastoral support service. You must be able to follow systems, procedures and processes to the standards required by the School, Trust and appropriate regulatory bodies.

Responsibilities will include working with the Heads of Year, Senior Leadership Team, support staff team, teaching staff and outside agencies to ensure all our students receive relevant, appropriate and focused support and behave to the high standards expected in our school. Previous experience of working with young people would be an advantage.

The post holder will also play a key part in the administrative function of the school, inputting and analysing student data, communicating both verbally and in writing with a variety of stakeholders and undertaking a range of pastoral administrative duties.

Role summary

Post title:	Pastoral Support Assistant
Profile:	BS3.5
Grade:	4
Grade spinal point range:	SCP 7 to 12
Salary:	£25,584 - £27,711 (pro rata £22,066 - £23,900)
Accountable SLT post:	SLT Lead responsible for Behaviour
Line manager (if different):	Head of Year
Staff to be supervised or line managed by post holder:	N/A
Post holder will work with:	Students, teaching and support staff
Holiday and sickness relief:	By and for other pastoral support staff
Purpose of post:	To provide support to pastoral teams including supporting the implementation of the behaviour management systems in school and contribute to the overall effective administration of the school.
Version revised:	August 2023

Contract:

Permanent

37 hours/39 weeks



Job description

The post holder must at all times carry out their responsibilities within the spirit of the school and trust policies and within the framework of legislation relating to academies and education, with particular regard to the statutory responsibilities of the trust and the governing body of the school.

The specific duties and responsibilities include but are not limited to:

Specific duties and responsibilities

1.1 Supporting Students

- Provide pastoral support to students
- Promote punctuality and positive lesson attendance with identified cohorts of students
- Support the implementation of the schools behaviour management system for example supporting 'on call' and lesson 'remove'
- Supervise students at unstructured times to ensure calm behaviour
- Receive and supervise students excluded from, or otherwise not working to, a normal timetable (by arrangement with the Head of Year)
- Attend to students' personal needs and provide advice to assist in their social, health & hygiene development
- Participate in the identification of students to determine those in need of particular help
- Respond to emotional, social, health and well-being issues of students, and their families, where difficult or challenging making the appropriate referral
- Support in resolution of conflicts/issues that may be a barrier to student learning and engagement
- Assist the Head of Year with the implementation of plans such as - Individual Education/ Behaviour/ Support/ Mentoring
- To communicate effectively with parents / carers to maintain positive working relationships
- Establish productive working relationships with students, acting as a role model to challenge and motivate students, promote and reinforce their self-esteem
- Provide support for distressed students
- Assist the speedy/effective transfer of students across phases/integration of those who have been absent

1.2 Support Teaching & Learning

- Support Teachers and cover teachers to start and teach effectively by promoting punctuality, attendance and routines
- Support with pastoral admin, for example updating records in the appropriate management information systems (MIS), as agreed with other staff, and contributing to reviews of systems/records as requested

- Dealing with highly confidential and sensitive information about students and parents/carers – including disclosures, safeguarding, information from primary or previous schools about pupil's home life, illnesses, special educational needs.
- Assist in the development and implementation of appropriate behaviour management strategies
- Assist in the development, implementation, monitoring and administration of systems relating to attendance and integration. Including identification of groups and working with appropriate parents, carers, external agencies etc to encourage improvement.
- Assist in the production of relevant year group marketing materials for events, prospectus, including organisation of open evenings and other appropriate events.
- Working to the standards set for the whole school administration team - provide Heads of Year with admin support e.g. dealing with correspondence, enquiries, making phone calls, compilation/ analysis/reporting on attendance, exclusions, etc
- Covering Key Stage office duties when Key Stage Leaders teaching etc and unavailable
- Support extracurricular and enrichment activities

Support for the trust/school

- Be aware of and comply with policies and procedures relating to child protection, health, safety and security, confidentiality and data protection, reporting all concerns to an appropriate person.
- Work in a flexible way to respond to the needs of the trust and to fulfil other duties and responsibilities appropriate to the grade and role as and when required.
- Be aware of and support difference and ensure equal opportunities for all.
- Appreciate and support the role of other professionals.
- Attend and participate in relevant meetings as required.
- Contribute to the overall ethos/work/aims of the trust/schools.
- Participate in relevant training, other learning activities and performance management as required.
- Team responsibilities: all staff are considered part of the overall trust team and may be required to provide assistance to colleagues in other areas from time to time commensurate with the role, skillset and grade.
- From time to time, to meet the needs of the trust, you may be asked but not expected to work hours additional to your normal working hours. The trust will give you as much notice as possible and you will be paid/recompensed for such work. Situations where this might be required are, for example: relevant key school events such as open evenings, exam results days, trips, clubs, training etc.

Changes to these duties

The above duties are not exhaustive and the post holder may be required to undertake tasks, roles and responsibilities as may be reasonably assigned to them by the Headteacher.

The job description and allocation of particular responsibilities will be kept under review and may be amended via consultation with individuals, the governing body or board of trustees and/or senior leadership team as required. Trade union representation will be welcomed in any such discussions.



Person Specification

Job Title: Pastoral Support Assistant

REQUIREMENTS	Essential	Desirable	Assessment method A = application I = interview R = reference
Knowledge, experience and skills			
Generic administrative experience to include word processing/typing, filing, collating, proof-reading of material, data entry and spreadsheet use, using Microsoft Office packages.	✓		A
Experience working in a school environment and engaging with challenging children/young people and their families.		✓	A
Working in a busy environment with many priorities and conflicting deadlines.	✓		A / I
Ability to empathise with children and young people.	✓		A
High degree of motivation for working with children and young people.	✓		A / I
Qualifications			
Good level of literacy and numeracy eg GCSE Maths and English at grade 4 or above.	✓		A
Evidence of regular, relevant and recent personal development.	✓		A
Recent participation in training which is equivalent to working with children/young people.		✓	A
Other skills			
Communicate effectively with people at all levels eg school staff, students, governors and external contacts/ suppliers.	✓		I
Work effectively as part of a team recognising own role as a team member.	✓		A / I
Able to maintain a positive focus, accepting constructive criticism positively and learning from it.	✓		A / I

Demonstrate an enthusiastic and positive approach regarding change, having a definite 'can do' mentality.	✓		I
Ability to learn from experiences.	✓		I
Ability to carry out instructions accurately and effectively as directed by line manager.	✓		I
Demonstrate customer care.	✓		A
Ability to work alongside young people (not necessarily in school environment).	✓		A / I
Interpersonal skills			
Ability to maintain confidentiality	✓		A
Accuracy when receiving information (verbally and written) and communicate information effectively and accurately.	✓		I
Able to make a positive contribution to the team.	✓		A
Able to reflect on performance and further develop own knowledge and skills to improve performance.	✓		I
Maintains standards set by the organisation.	✓		I
Takes responsibility for own actions.	✓		I
Ability to work alone unsupervised and manage own workload.	✓		A / I
Child protection			
A commitment to the responsibility of safeguarding and promoting the welfare of young people.	✓		I

Eckington School & Sixth Form

Eckington School is an 11-18 comprehensive secondary school in north-east Derbyshire with more than 1200 students on roll, including the school's Sixth Form.

Eckington School joined Chorus Education Trust in April 2023, at which point we also welcomed a new headteacher, whose proven track record in developing a positive ethos under strong leadership is enabling the school on its journey of improvement. Further appointments to the senior leadership team have created a school with ambition to deliver on the Chorus Trust ethos of outstanding achievement for all.

The school itself is situated on the outskirts of Eckington on the Derbyshire/Sheffield border, overlooking open countryside. The campus is arranged around a shrub-filled courtyard that enables easy access to outside spaces for all.



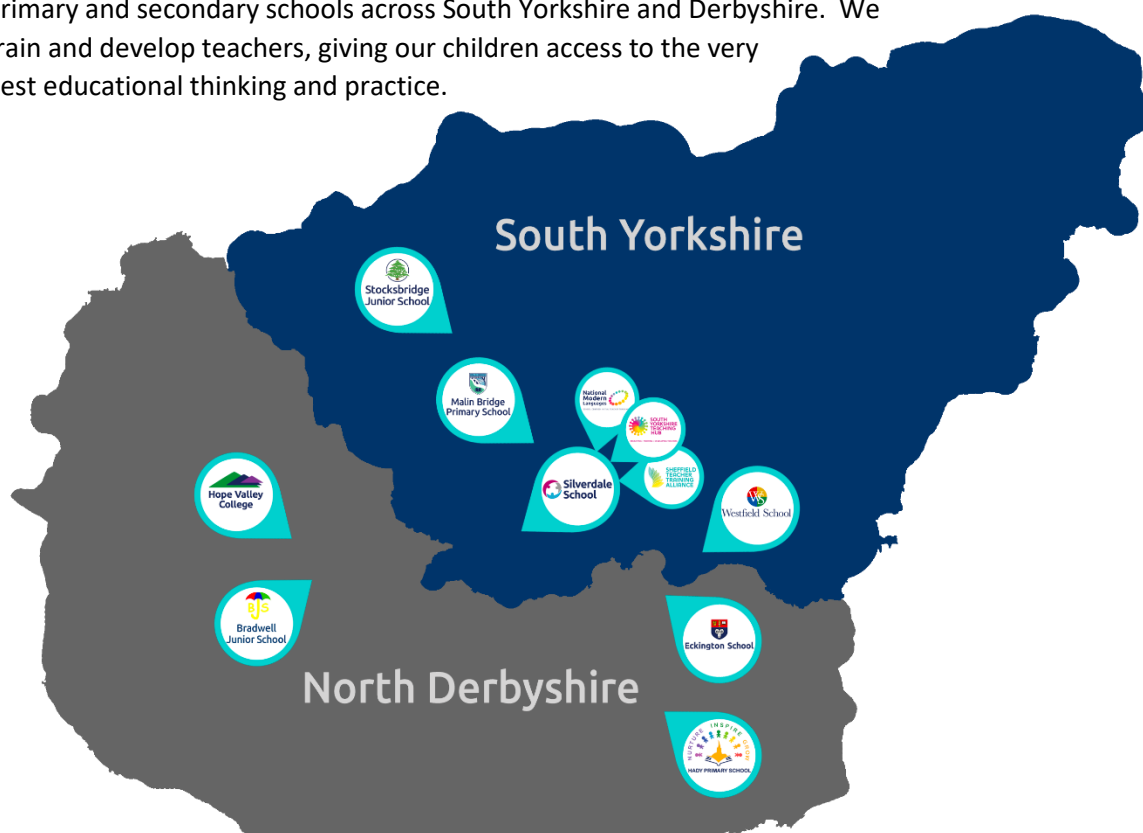
In addition to trust-wide benefits for all staff, those at Eckington School also have access to:

- Supportive and friendly staff and leadership team.
- Free staff parking.
- Opportunity to be part of the varied extracurricular offering, including Duke of Edinburgh's Award programme.

You can view the school website at: www.eckington.chorustrust.org.

Chorus Education Trust

Chorus Trust is a growing trust, committed to providing every child with the best education in both primary and secondary schools across South Yorkshire and Derbyshire. We train and develop teachers, giving our children access to the very best educational thinking and practice.



Our vision is 'Outstanding Achievement for All'. We want to create a culture of success in which our children and young people can succeed. We do this through the provision of safe and supportive schools, collaborating to ensure our children benefit from a more effective spend of public money.

As part of the Chorus Trust Team, all staff have access to:



An ethos of being a **force for good**; of being part of a team that enables 'outstanding achievement for all'.



A **collaborative environment** encouraging knowledge sharing and support.



Competitive **pension schemes**: Teacher's Pension Scheme (teaching staff) and local government pension scheme (support staff).



Career progression opportunities within a growing, local trust.



Leading edge **training and development** through the South Yorkshire Teaching Hub.



Discounted **health schemes** through Westfield Health and Westfield Rewards Schemes.



Term-time only contract postholders have the freedom of having **school holidays** off.



Support for **flexible working** arrangements.

You can read more about Chorus Trust at www.chorustrust.org.

To apply

- Full application pack and application forms available from: www.chorustrust.org/vacancies
- Completed application forms are to be sent to: HR Administrator at: recruitment@eckington.chorustrust.org
- Please note that CVs and council application forms will not be accepted.
- Deadline for applications: 11.59pm on 24 August 2025
- Interviews to be held: week beginning 1 September 2025.

Disability confident

Chorus Trust is part of the disability confident scheme. We guarantee to interview all disabled applicants who meet the minimum criteria for the vacancy.



Safeguarding

At Chorus Trust we are committed to the safeguarding of all our pupils, please visit our website to access our safeguarding and child protection policy at www.chorustrust.org/policies.

The trust will conduct an online search of the successful candidate in line with the DfE's keeping children safe in education advice.

The successful candidate will be required to complete a Disclosure and Barring Service (DBS) check in line with the Rehabilitation of Offenders Act (ROA) 1974 (Exceptions) Order 1975 and the Police Act Regulations.